



CORPORATE  
AND PRIVATE EVENTS

V&A

Museum of Childhood

+44 (0)20 8983 5221

[moc.hire@vam.ac.uk](mailto:moc.hire@vam.ac.uk)

Cambridge Heath Road, London E2 9PA





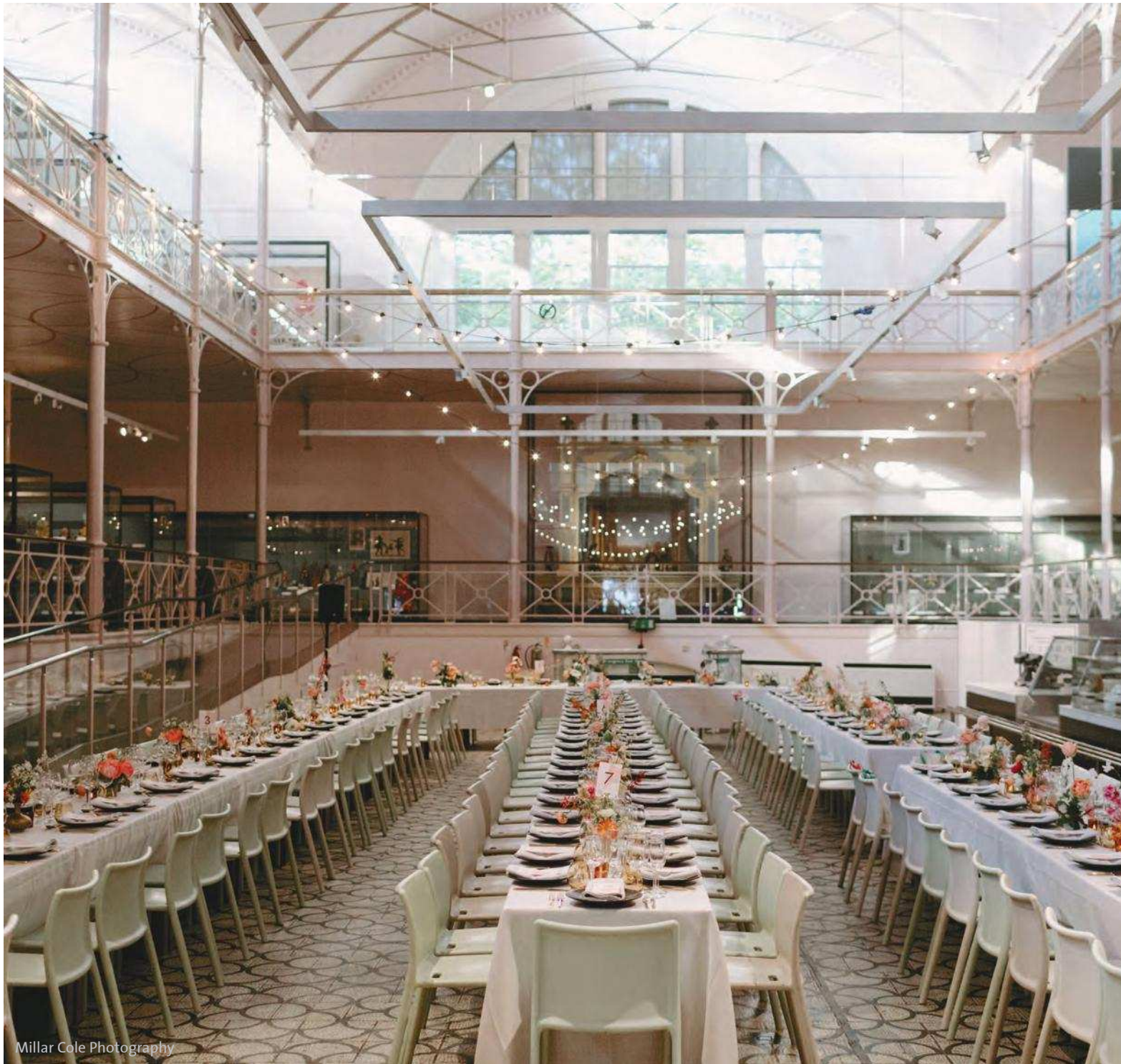
## THE MUSEUM

The V&A Museum of Childhood is one of London's best-loved museums and offers a unique and historical venue on the edge of the City.

The Museum, which was opened in 1872 by the Prince of Wales, is a magnificent, grade II listed Victorian building, boasting remarkable spaces and many original 19th century features, including the elegant and historic Marble Floor laid by female prisoners from Woking gaol. The Marble Floor is surrounded by the collections creating a memorable backdrop for any event.

The Museum is a charitable organisation and every single penny we make from our venue hire goes straight back into helping us to refurbish galleries, improve the facilities and our collections and develop our learning programme.





Millar Cole Photography

## MARBLE FLOOR

This is the main space in the building and houses the famous fish scale pattern marble floor laid in 1872. This space is well suited to both seated dinners and standing receptions. The Marble Floor accommodates up to 300 for a dinner and 900 for a standing reception.

Hire of the Marble Floor for a catered event includes the Summerly Room for catering set up and the Front Room Gallery for a drinks reception. There are also two versatile lawns located on either side of the Museum available for drinks receptions.







## MARBLE FLOOR

The Marble Floor is offered on a 'dry hire' basis allowing you to source and appoint your choice of suppliers including caterers, decorators and production to name a few. The Museum also has a select list of suppliers you are welcome to use. Alcohol service is permitted until 2300 and if required, an extension can be organised with prior arrangement.

As the Museum is open to the public every day, hire of the Marble Floor is from 1800. Partial set up can begin from 1630 with prior arrangement.





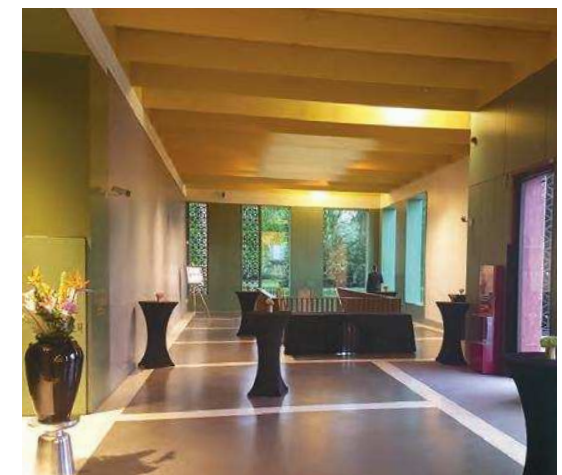
## FRONT ROOM GALLERY

Located at the entrance to the Museum, this gallery houses our temporary exhibitions and is a unique space for your guests to mingle prior to the main event or for an event itself.

## SUMMERLY ROOM

The Summerly Room is a large multipurpose space which can seat up to 150 theatre style or 34 boardroom style. The room contains a fixed ceiling projector with pull down screen. All the furniture can be moved so the room can be set up to suit individual requirements.

Please note the room is available from 1500 during term time weekdays or all day on weekends and school holidays.







## HICKORY / MULBERRY ROOMS

These rooms are available for smaller meetings or as break out rooms for larger conferences. Each room can seat up to 40 theatre style or 20 boardroom style and are equipped with a plasma screen.

Please note these rooms are available from 1500 during term time weekdays or all day on weekends and school holidays.

# CAPACITIES

	Drinks Reception	Dinner	Availability
MARBLE FLOOR	900	230 with dance floor 300 without dance floor	1800 - 2300 extended hours available
FRONT ROOM GALLERY	100		1800 - 2300 extended hours available
MUSEUM LAWNS North and South	300		1600 - 2000

	Theatre	Boardroom	Availability
SUMMERLY ROOM	150	34	1500 - 2300 term time weekdays  All day holidays & weekends
HICKORY / MULBERRY ROOM	40	20	1500 - 2300 term time weekdays  All day holidays & weekends